

CERTIFIED LAND CORNER RECORDATION

DESCRIPTION OF CORNER EVIDENCE FOUND, AND ORIGINAL RECORD (if known)

<i>Location</i>		<i>Found: Nail W/cap, re-set 5/8" rebar flush W/asphalt</i>
28 27		
33 34		

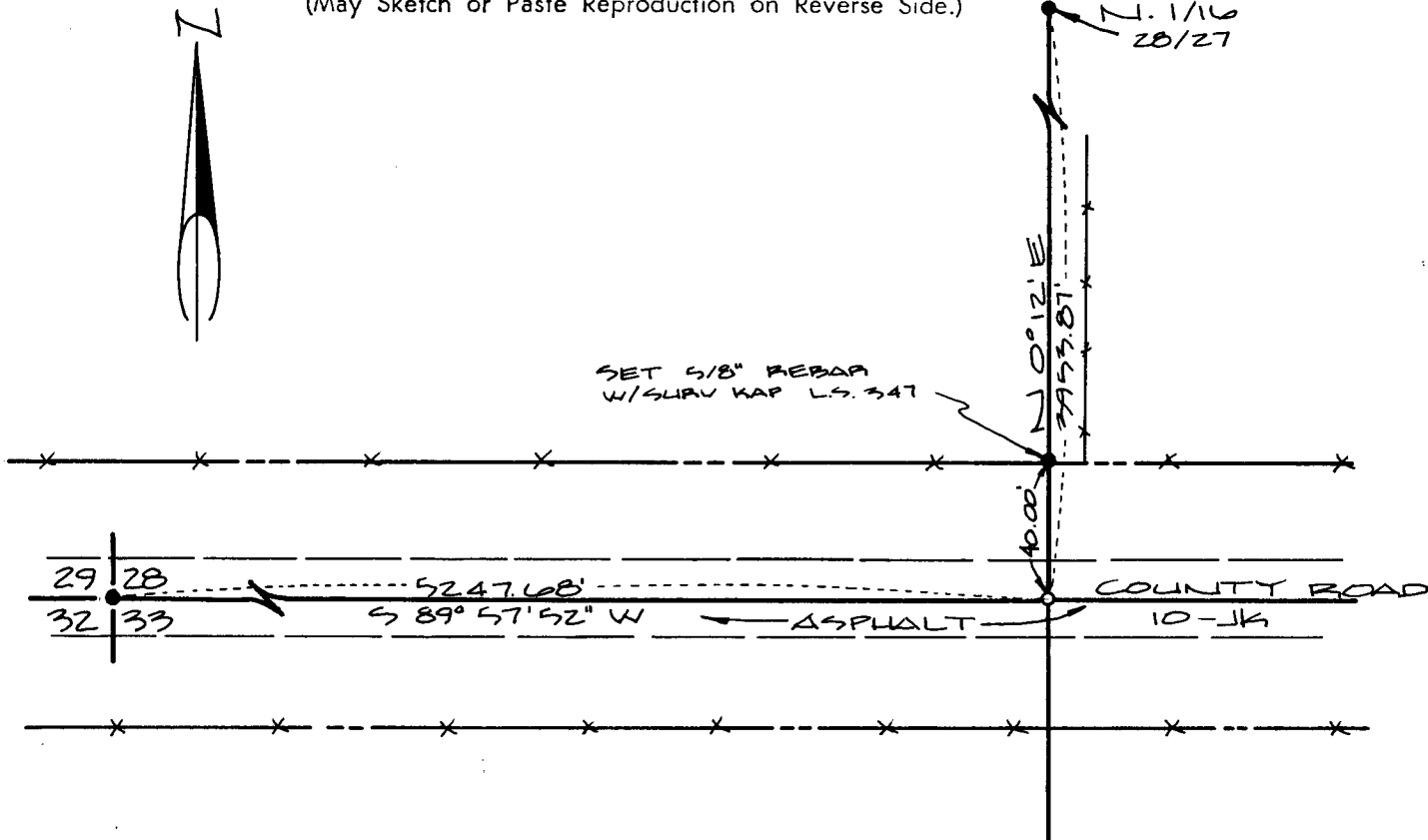
T.14N., R.61W.
6th P.M.

DESCRIPTION OF MONUMENT AND ACCESSORIES ESTABLISHED
TO PERPETUATE THE ORIGINAL LOCATION OF THIS CORNER:

At the corner: Found nail W/cap, re-set 5/8" rebar.

Reference Points: As described in sketch.

SKETCH, WITH COURSE AND DISTANCE TO ADJACENT CORNER IF DETERMINED IN THIS SURVEY.
(May Sketch or Paste Reproduction on Reverse Side.)



I, Glen L. Roberts certify that I have carefully performed or reviewed the work done on the diagrammed corner as reported on this recordation form and approve the same.

Glen L. Roberts Wyoming P.E. & L.S. #347
Signature of Surveyor Registration No.

STATE OF WYOMING,
Office of Clerk and Recorder,
County of Saramie

568605

This "corner record" was filed for record on the FEB 21 1980 day of FEB 21 1980, 1980, was noted on the cross-index plat and is assigned page No. , in book No. .

Janet C. Whitehead
County Official

Cross Index No.	T. <u>V13</u>	R. <u>14</u>	Mer. <u>61</u>
	T. <u> </u>	R. <u> </u>	Mer. <u> </u>
	T. <u> </u>	R. <u> </u>	Mer. <u> </u>
	T. <u> </u>	R. <u> </u>	Mer. <u> </u>
	T. <u> </u>	R. <u> </u>	Mer. <u> </u>
	T. <u> </u>	R. <u> </u>	Mer. <u> </u>